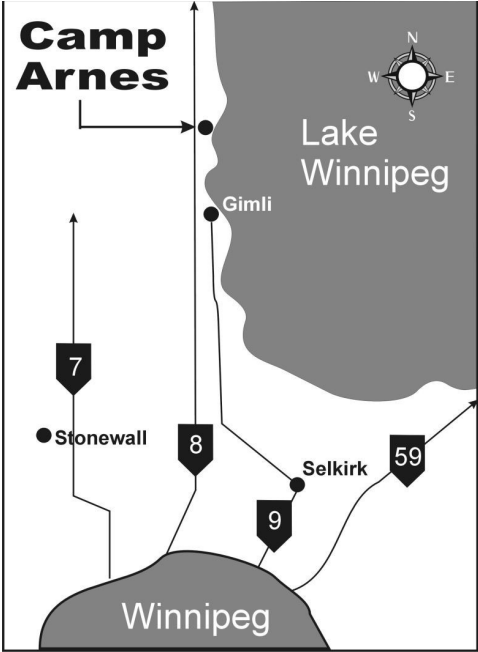


Camp Arnes is a Christian non-profit Camp, Outdoor Education and Retreat Centre. Our purpose is to further God's kingdom through relationships and adventure in creation.



For more information or to place a booking, contact . . .

**Bookings Coordinator**  
50 Furniture Park, Winnipeg, MB R2G 1B9

**Mailing Address**  
Box 28009 PRO NK  
Winnipeg, MB R2G 4E9

Phone: 204- 338-4647  
Email: [bookings@camparnes.com](mailto:bookings@camparnes.com)



Accredited by



# RENTAL PACKAGES 2023

Available for  
Retreats Church  
Groups  
Family Gatherings  
Conferences Seminars  
Community Groups

Prices in effect  
January 1 to December 31, 2023

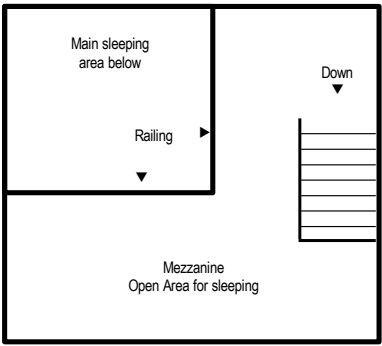
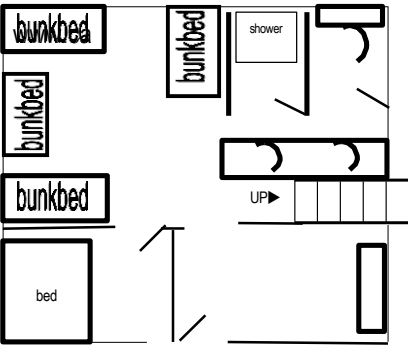
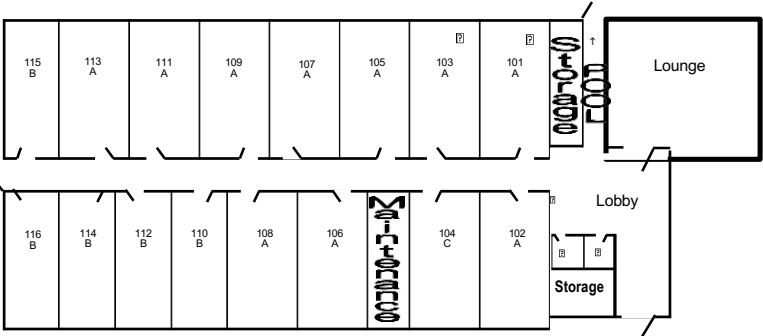


## ACCOMMODATIONS & MEETING AREAS

### CEDAR LODGE - 16 rooms

Each room has a 3-piece private bath, carpeted floor, night table, dresser, table and chairs and twin beds. "A" rooms contain 4 beds. "B" rooms contain 3 beds. Meeting area with coffee station. Linens provided.

Total capacity 58 people,



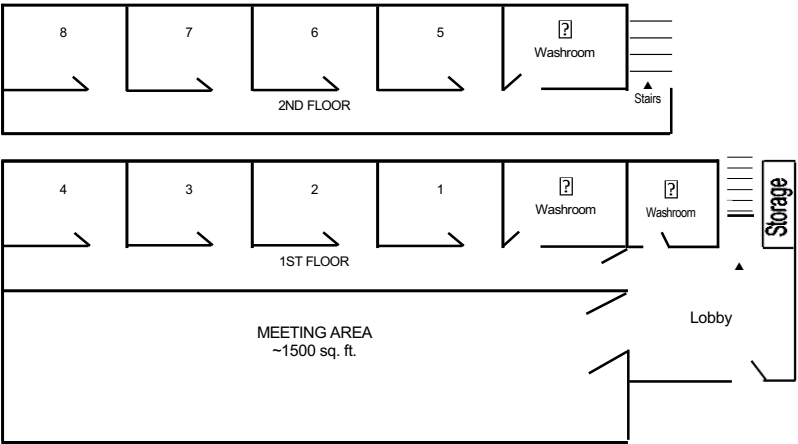
### CHALETS - 3 chalets, 2 units each

Each unit contains a private room bunkbeds, washrooms, shower area and sinks. Additional sleeping for 4-6 (on foamies) available in Mezzanine. Linens not provided. Total capacity 10-15 per unit, minimum 6 per unit.

### POPLAR GROVE

4 rooms upstairs, 4 rooms downstairs. Each room contains bunkbeds. 4 Common washroom each floor. Meeting area with coffee station. Linens not provided.

Total capacity 64,  
minimum 30.



**CABINS - 12 heated cabins.** Bunkbeds; linens not provided. Full washroom facilities in cabin vicinity. Individual cabin size varies from 8-14 people per cabin, minimum 6 per cabin. Combined capacity of all cabins 122 people.



# RATES & RENTAL INFORMATION

## TWO NIGHT GROUP RATES

Includes TWO nights accommodation, FIVE meals and TWO evening snacks in any consecutive order, ONE meeting area, host/hostess and janitorial services. **All fees are subject to G.S.T.**

Package Rate/Person	Basic Rate Adult & Youth	Basic Rate Children age 5-10
Cedar Lodge	\$176.00	\$101.00
Poplar Grove	\$150.00	\$88.00
Chalets	\$140.00	\$83.00
Cabins	\$110.00	\$66.00

## ONE NIGHT GROUP RATES

Includes ONE night accommodation, breakfast, lunch, supper and evening snack in any consecutive order, ONE meeting area, host/hostess and janitorial services. **All fees are subject to G.S.T.**

Package Rate/Person	Basic Rate Adult & Youth	Basic Rate Children age 5-10
Cedar Lodge	\$96.00	\$57.00
Poplar Grove	\$83.00	\$55.00
Chalets	\$77.00	\$50.00
Cabins	\$66.00	\$44.00

*For stays longer then TWO nights please contact Bookings Coordinator for additional pricing information.  
Children ages 0-4 are free of charge.*

## ADDITIONAL INFORMATION

**BOOKING PROCEDURE** - Groups of 20 or more may book retreats year-round with the exception of July and August. Bookings for less than 20 people will be considered based on availability. Grounds will be shared with other groups. Exclusive bookings can be requested (pending space availability). An exclusive booking assumes that all facilities are booked.

**MINIMUM ATTENDANCE** - There is a minimum attendance expectation set for each group that is determined by the accommodations booked and the minimum that is set for each. Only paying guests who stay at least one night count toward minimum numbers. If you do not meet your minimum you will be charged a percentage of the fees for the remainder of minimum.

**LARGE GROUP DISCOUNT** - Applies to full and part-time retreaters, providing they stay for at least one night and minimum attendance requirement is met. Discount applies to package rate only. Children age 0-4 do not count towards total numbers.

**DEPOSIT** - A completed application form and deposit is required to confirm a reservation. The deposit is non-refundable nor transferrable to another date or group.

**SMOKING/VAPING & ALCOHOL POLICY** - Smoking/Vaping is ONLY allowed in the main parking lot. NO alcohol or marijuana permitted on camp property.



## CAMP ARNES STAFFED ACTIVITIES

Available to help enrich your program. Specialty areas include: archery, high ropes, zip line swing (spring & fall only), instincts for survival, orienteering, cross-country skiing, snow shoeing, cooperative games and initiative tasks.

Fee for resource staff is **\$55.00/hr/ staff** (staff requirement depends on activity).



## Recreational Activities & Equipment

### Spring / Fall

A variety of recreational activities and equipment are available to your group. They are included in your package price.

### Winter

Basketball ♦ Shuffleboard ♦ Pool Ball ♦ Beach Volleyball ♦ Tether Ball Volleyball  
♦ Soccer ♦ Football

Broomball ♦ Snowshoes ♦ Skating Rink ♦ Cross Country Skiing ♦ Toboggan Run

### Year Round

Shooshing Boards ♦ Ping Pong ♦ Play Structure ♦ Human Foosball ♦ Tractor Hay Ride

### Equipment

General Sound System (\$94/wknd) ♦ LCD Projector (\$61/wknd)

### Rental

Small Sound System (\$61/wknd) ♦ These are all booked on a first come basis.

**All fees and activities available are subject to change and G.S.T.**

